

KSV08-3L

二位三通电磁阀 锥阀型

说明 DESCRIPTION

A solenoid operated, 3-way, 2-position, poppet-type cartridge valve.

二位，三通，座阀式电磁阀

工作 OPERATION

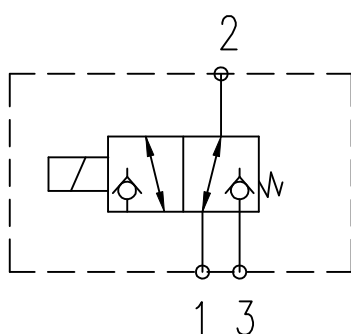
When de-energized, the valve allows flow from ② to ① or from ① to ②, while blocking flow at ③. When energized, the valve allows flow from ② to ③ or from ③ to ②, while blocking flow at ①.

失电时，②和①通，与③不通；得电时，②和③通，与①不通

技术参数 SPECIFICATIONS

最大工作压力(Max. Operating pressure):	350bar
最大流量(Max. Flow):	20 L/min.
内泄漏(Internal Leakage):	<1 drops/min. (滴/分) Our ideal leakage: 0.05 drops/min
温度(Temperature):	-40° F to +212° F (-40° C to +100° C)
油液(Fluids):	Mineral-based fluids with viscosities of 7.4 to 420 cSt. (矿物油粘度)
插孔(Cavity):	VC08-3
阀块材料(Body Material):	Steel & Ductile iron rated to 350bar 钢和球铁允许使用最大压力350bar

符号 SYMBOL



压力-流量曲线 PRESSURE DROP VS. FLOW

