

**KFC12-20A-0-N**

流量控制阀

工作 OPERATION

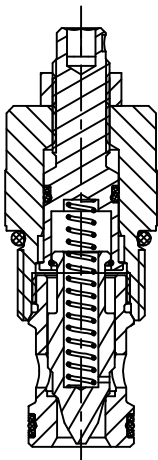
说明 DESCRIPTION

Threaded cartridge, variable orifice, throttle valve with check valve.

螺纹插装式，可节流孔，带单向阀的节流阀。

KFC12-20A, when rotating counterclockwise, can adjust the flow from ② to ①. Built-in guide check valve, it is closed under the action of spring pre-pressure, when the force at the ① is large enough, open the ① to ② channel.

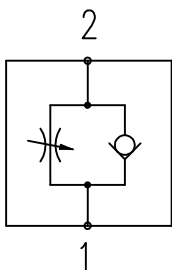
KFC12-20A, 逆时针旋转时,可以调整从②流向①的流量。内置导向单向阀,它在弹簧预压力的作用下呈闭合状态,当①处受力足够大时,打开①到②通道。



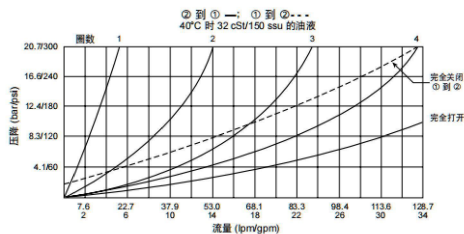
技术参数 SPECIFICATIONS

最大工作压力(Max. Operating pressure):	240bar
弹簧开启压力:	1.4bar (20psi)
最大流量(Max. Flow):	128l/min.
温度(Temperature):	-40℃~120℃
内部泄漏:	240bar (3500psi) 时: 0.15毫升/分钟 (3滴/分钟) 最大
油液(Fluids):	粘度介于7.4~420cSt (50~2000ssu) 的矿物油或具有润滑作用的合成油
插孔(Cavity):	VC12-2

符号SYMBOL

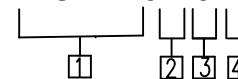


压力-流量曲线 PRESSURE DROP VS. FLOW



订货代号 TO ORDER

**KFC12-20A-0-N**



1 功能

KFC12-20= 流量控制阀  
Flow control valve

2 调节选件:

- A: 1/4寸内六角头
- B: 直径1-1/2寸, 铝合金手柄
- C: 选件A, 带螺帽盖
- D: 顶部手柄, 带锁紧螺帽
- E: 仅指顶部手柄

3 阀块油口:

- 0: 仅订购插装件
- 10T: SAE10
- 12T: SAE12
- 16T: SAE16
- 4B: 1/2英寸BSP\*
- 6B: 3/4英寸BSP\*
- 8B: 1英寸BSP\*

4 密封件:

- N=丁腈橡胶 (标准)
- V=氟橡胶

安装尺寸 INSTALLATION DIMENSIONS

