

KPD10-40B

四通液控换向阀，外部泄油

说明 DESCRIPTION

Threaded cartridge type hydraulic control direction valve, sliden valve type, for remote control tee oil line.

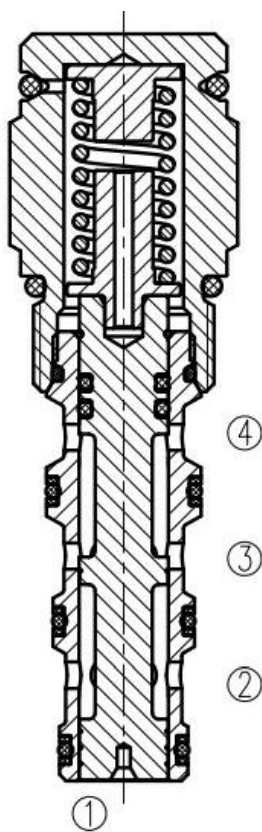
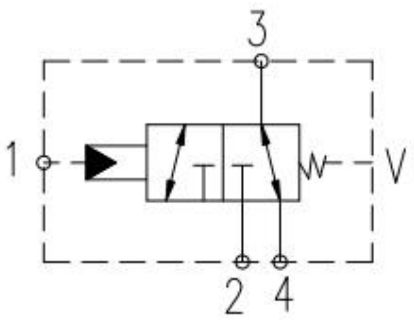
螺纹插装式液控方向阀，滑阀式。用于远控四通油路。

工作 OPERATION

In the initial position(no fluid control),the KPD10-40allows the oil to flow bidirectionally from ③ to ②,and to cut off at ④. V is a spring chamber that atmosphere,and the chamber adopts.The ring seals the inner oil passage to prevent oil from flowing into the chamber.When the remots signal reaches 0,the spool moves, the ③ flow direction is connected,and the ② is closed.Due to the use of a spring chamber with an oil drain hole,the plug-in can be fully pressurized at any oil port without affecting the required hydraulic pressure.

在初始位置（无液控）时，KPD10-40 允许油液从 ③ 向 ② 双向流动，而在 ④ 处截止。V 是可通大气的弹簧腔，该腔采用 O 型圈密封内部油道，防止油液流入该腔。当远端信号到达 ① 时，阀芯移动，③ 流向 ④ 接通，而 ② 处闭合。由于采用带泄油孔的弹簧室，因此可以在任何油口对插件完全加压，而不会影响所需的液控压力。

符号 SYMBOL



技术参数 SPECIFICATIONS

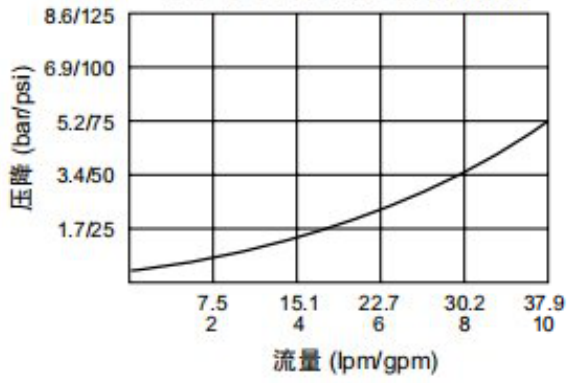
工作压力 (Operating pressure):	240bar
额定流量 (Rated Flow):	30L/min
内部泄漏 (Internal leakage):	Max 82 ml/min (5 cubic inches/min) at 207 bar 3000 (psi)
开启压力 (Cracking pressure):	11.7bar
温度 (Temperature):	-40° C to + 120° C
过滤 (Filtration):	参考过滤要求 (Reference filter requirements)
油液 (Fluids):	Mineral-based fluids with viscosities of 7.4 to 420 cSt. (矿物油粘度)
插孔 (Cavity):	VC10-4

压力-流量曲线 PRESSURE DROP VS. FLOW

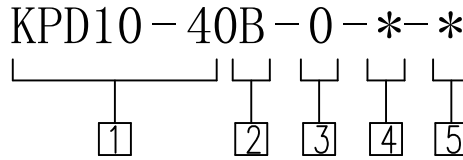
③ TO ④ or ③ to ②

32cSt/150ssu of oil at 40°C

③ 到 ④ 或 ③ 到 ②
40°C 时 32 cSt/150 ssu 的油液



订货代号 TO ORDER



1 公司代码
Company code

4 密封件 Sealing ring
N 丁腈橡胶 (标准型)
BUNA N (Std.)

2 A
A=2,3口常开 (2, 3bits usually open)
B=3,4口常开 (3, 4bits usually open)

5 弹簧规格 Spring specifications
60 =60Psi (4.1bar)
110=110Psi (7.6bar)
170=170Psi (11.7bar)

3 0
0= 只订插件
0=Order plug-ins only

安装尺寸 INSTALLATION DIMENSIONS
备注 Description
如有其它特殊要求, 请联系工厂
For other special requirements,
please contact the factory

安装尺寸 INSTALLATION DIMENSIONS

