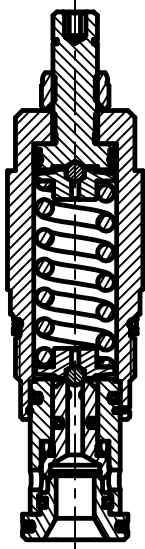


**KRDFA-LAN**  
溢流阀



**工作 OPERATION**

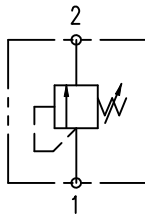
The direct acting relief valve is a normally closed pressure limiting valve, which is commonly used to protect hydraulic components to prevent them from being impacted by transient pressure. When the pressure at the inlet (port 1) reaches the valve's set point, the valve begins to overflow to the fuel tank (2), throttling to limit the pressure on the opening. This kind of valve has the advantages of smooth adjustment, low noise, basically zero leakage, strong oil pollution resistance, anti-blocking and fast response speed.

直动式溢流阀为常闭压力限制阀，常用来保护液压元件，以防止其受瞬态压力的冲击。当压力在进口（口1）达到阀的设定值，阀开始向油箱（口2）溢流，节流以限制压力上升。此类阀调节平稳、噪声小，基本为零泄漏，抗油污能力强，防堵塞并且响应速度快。

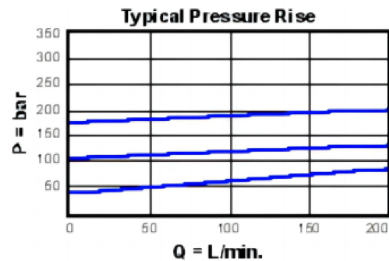
**技术特性**

- 调节螺杆的密封暴露在系统压力下。这意味着只有当压力被移除时，此阀才可被调节。设定流程为：检查设定，移除压力，调节阀，检查新设定。
- 此阀对变动的油液温度和油液污染不敏感。
- 选择溢流阀的弹簧范围时，为确保最大的可重复性，目标溢流设定值要接近最小和最大压力的中间范围。
- 配置EPDM密封圈的插装阀可在磷酸酯液压油系统。暴露在石油基液压油或润滑油脂中会损坏密封圈。
- 可在口2接受最大压力；适合应用在交叉端口的溢流油路中。

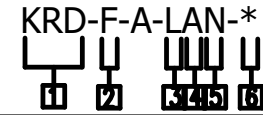
**符号SYMBOL**



压力-流量曲线 PRESSURE DROP VS. FLOW



订货代号 TO ORDER



**1 功能**

KRD=直动式溢流阀  
Normally closed pressure limiting valve  
Direct relief valve

**2 流量 Capacity**

F=200L/min

**3 控制方式 Control**

L= 标准螺钉调节  
Standard Screw Adjustment

**5 油封 SEAL KITS**

N=丁腈橡胶  
V=氟橡胶

**4**

弹簧调压 Spring Ranges  
B=300-1500 psi (20- 105 bar),  
1000 psi (70 bar) 标准设定值  
C=1000-6000 psi (70 - 420 bar),  
1000 psi (70 bar) 标准设定值  
D=200-800psi (14- 55 bar),  
400 psi (28 bar) 标准设定值  
E=100-400psi (7 - 28 bar),  
200 psi (14 bar) 标准设定值  
S=50-200psi (3,5 - 14 bar),  
100 psi (7 bar) 标准设定值

**6**

阀块油口 BODY PORTING  
空白 Blank= 不带阀块 None  
6T=SAE6  
8T=SAE8  
3G=G 3/8  
4G=G 1/2

**安装尺寸 INSTALLATION DIMENSIONS**

