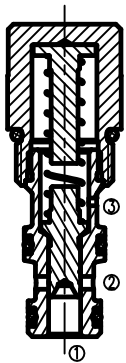


KEP08-35-0-N-10

液控逻辑阀



工作 OPERATION

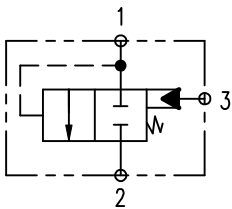
KEP08-35 internal spring stop valve, only when the ① pressure at the ③ place exceeds the sum of the total pressure and the spring pre-pressure at the three places, the spool will move, so that the oil will be released ① Full flow ②. EP08-35 is a liquid-controlled closed direction valve. When there is no pressure at ③, the pressure at ① exceeds the spring pre-pressure, and the oil will flow from ① to ②.

KEP08-35为弹簧截止阀，只有在 ① 处的压力超过 ③ 处的总压力和弹簧预压力之和时，阀芯才会移动，从而使油液由 ① 完全流向 ②。EP08-35 为液控闭合方向阀。当 ③ 处无压力时，一旦 ① 处的压力超过弹簧预压力，油液将从 ① 流向 ②。

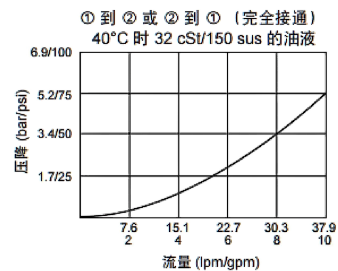
技术参数 SPECIFICATIONS

工作压力 (Operating Pressure):	345bar
流量 (Flow):	38L/min
内泄露 (Internal leakage):	在 345 bar (5000 psi) 时，最大为 115 毫升/分钟 (7 立方英寸/分钟)
温度 (Temperature):	-40°C ~ 120°C (标准丁腈橡胶密封)
油液 (Fluids):	粘度介于 7.4~420 cSt (50~2000 SSU) 的矿物油或具有润滑作用的合成油
插孔 (Cavity):	VC08-3

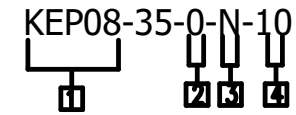
符号 SYMBOL



压力-流量曲线 PRESSURE DROP VS. FLOW



订货代号 TO ORDER



1 功能

KEP08=液控逻辑阀
Spring globe valve
Hydraulic controlled logic valve

4

弹簧调压 Spring Ranges
10=0.7bar(10 psi)
40=2.8bar(40 psi)
80=5.5bar(80 psi)
110=7.6bar(110 psi)
150=10.3bar(150 psi)

2 阀块油口 BODY PORTING

只订购插件件 0
SAE 6 (球墨铸铁) 6TD
SAE 6 (钢制) 6TS
SAE 6 (铝制) 6T

3 密封材料 SEALING MATERIAL

丁腈橡胶 (标准型) N
氟橡胶 V
聚氨酯橡胶 P

安装尺寸 INSTALLATION DIMENSIONS

