

KRPIE-LCN

溢流阀

说明 DESCRIPTION

A cartridge-style fast-acting balanced piston relief valve
快速响应型, 先导滑阀式溢流阀

工作 OPERATION

The valves are normally closed, pressure-limiting valves used to protect hydraulics components from pressure transients. Fast opening and closing is gained at the expense of smoothness. When the pressure at the inlet (port ①) reaches the valve setting, the valve starts to open to tank (port ②), throttling flow to limit the pressure rise. These valves have low pressure rise vs. flow and are very fast. Back pressure on the tank port ② is directly additive to the valve setting at a 1:1 ratio.

快速响应先导式滑阀型溢流阀用于保护系统的压力瞬时过载, 快速启闭时仍能保持系统平稳性。当①口压力超过阀的设定值时, ①口到②口溢流过载, 限制系统压力升高, 该阀对压力反应灵敏。

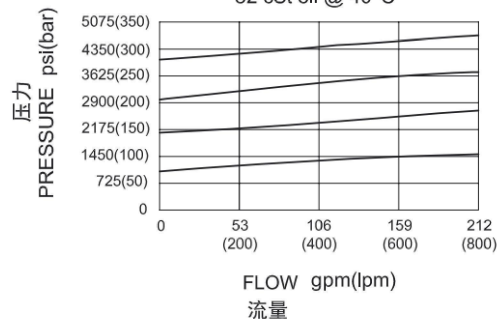
②口背压会按 1:1 叠加到阀的设定压力上。

技术参数 SPECIFICATIONS

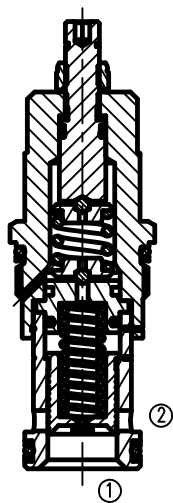
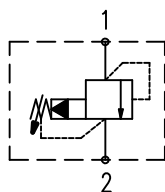
最大工作压力 (Max. Operating Pressure):	350bar
流量 (Capacity):	380 L/min.
内泄漏 (Internal Leakage):	50 cc/min. at 70 bar
响应时间 (Response Time- Typical):	2 ms
弹簧调压范围 (Standard Spring Ranges):	A 7 to 210 bar, preset 预设定: 70bar B 3.5 to 105 bar, preset 预设定: 70bar C 10.5 to 420 bar, preset 预设定: 70bar D 1.7 to 55 bar, preset 预设定: 28bar E 1.7 to 28 bar, preset 预设定: 14bar W 10.5 to 315 bar, preset 预设定: 70bar
温度 (Temperature):	-40° F to +250° F (-40° C to +120° C)
油液 (Fluids):	Mineral-based fluids with viscosities of 7.4 to 420 cSt. (矿物油粘度)
插孔 (Cavity):	T-16A
阀块材料 (Body Material):	Steel & Ductile iron rated to 350bar 钢和球铁允许使用最大压力350bar

压力-流量曲线 PRESSURE DROP VS. FLOW

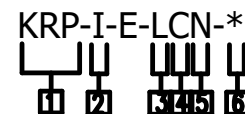
Typical Pressure Rise
32 cSt oil @ 40°C



符号 SYMBOL



订货代号 TO ORDER



1 功能

KRP= 先导式溢流阀
Fast-acting Pilot-operated Relief Valve

2 流量 Capacity

I=380L/min

3 控制方式 Control

L=Standard Screw Adjustment

5 油封 Seal Kits

N= 丁晴橡胶 Buna N
V= 氟橡胶 Viton

6 阀块油口 Body Porting

空白 Blank= 不带阀块 None
12T=SAE12
16T=SAE16
6G=G 3/4
8G=G 1

4 弹簧调压范围 Spring Ranges

A=100-3000psi (7-210bar)
Preset: 1000psi (70bar)
B=50-1500psi (3.5-105bar)
Preset: 1000psi (70bar)
C=150-6000psi (10.5-420bar)
Preset: 1000psi (70bar)
D=25-800psi (1.7-55bar)
Preset: 400psi (28bar)
E=25-400psi (1.7-28bar)
Preset: 200psi (14bar)
W=150-4500psi (10.5-315bar)
Preset: 1000psi (70bar)

Factory Pressure setting established at 15L/min;
工厂的设定是指溢流阀开启 (流量为 15L/min) 时的压力 ;

安装尺寸 INSTALLATION DIMENSIONS

