

KHRV-S08-Y

溢流阀

说明 DESCRIPTION

A cartridge-style direct-acting poppet-type relief valve
直动滑阀式溢流阀

工作 OPERATION

The valve prevents flow from ① to ② until the set crack pressure at ① is achieved. The poppet then unseats allowing flow from ① to ② protecting the circuit from over pressurization.

当在①口的压力超过调压弹簧设定的压力时，阀芯打开，①到②通，防止系统过压。

技术参数 SPECIFICATIONS

工作压力 (Operating pressure): 350bar

流量 (Flow): 30L/min

内泄漏 (Internal Leakage): 5 drops/min (滴/分). max. to 80% of nominal setting

闭合压力 (Reseat Pressure): 80% of crack pressure

开启压力 (crack pressure at 0.95 lpm / 0.25 gpm)

弹簧调压范围 (Standard Spring Ranges): 20 to 125 bar; preset 预设定: 69 bar

40 to 180 bar; preset 预设定: 138 bar

50 to 240 bar; preset 预设定: 172 bar

180 to 350 bar; preset 预设定: 207 bar

温度 (Temperature): -40° F to +250° F (-40° C to +120° C)

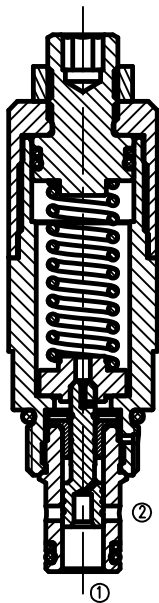
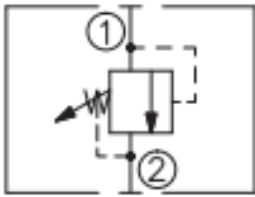
油液 (Fluids): Mineral-based fluids with viscosities of 7.4 to 420 cSt. (矿物油粘度)

插孔 (Cavity): VC08-2

阀块材料 (Body Material):

Steel & Ductile iron rated to 350bar 钢和球铁允许使用最大压力350bar

符号 SYMBOL



压力-流量曲线 PRESSURE DROP VS. FLOW

