

KCVR2-16-2.1

反向型单向阀

说明 DESCRIPTION

A cartridge-style poppet-type check valve
反向锥阀式螺纹插装单向阀

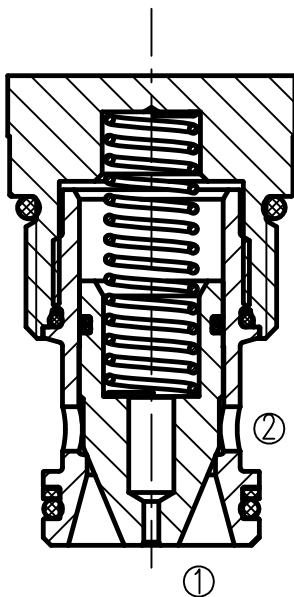
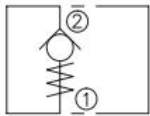
工作 OPERATION

When pressure at ② rises above the spring bias pressure, the poppet is pushed from its seat and flow allowed from ② to ① .
The valve is closed (checked) from ① to ② .
当在②口的压力超过开启压力，②到①开启；
反方向，①到②关闭。

技术参数 SPECIFICATIONS

工作压力 (Operating Pressure):	350bar
流量 (Flow):	500l/min
内泄漏 (Internal Leakage):	2 drops/min(滴/分). max. at 350bar
开启压力 (Crack Pressures):	2.1bar
温度 (Temperature):	-40° F to +250° F (-40° C to +120° C)
油液 (Fluids):	Mineral-based fluids with viscosities of 7.4 to 420 cSt. (矿物油粘度)
插孔 (Cavity):	16-2, See page M-3
阀块材料 (Body Material):	Steel & Ductile iron rated to 350bar 钢和球铁允许使用最大压力350Bar

符号 SYMBOL



压力-流量曲线 PRESSURE DROP VS. FLOW

