

KSF08-22

二位二通电磁阀

说明 DESCRIPTION

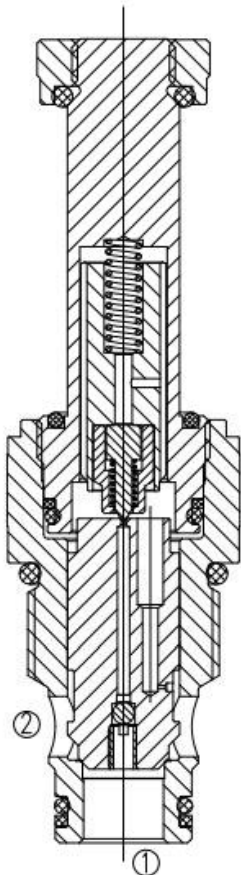
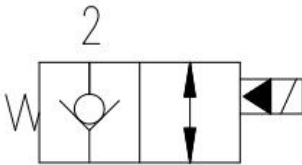
A cartridge-style 2-position 2-way Threaded cartridge directional valve
二位, 二通, 螺纹插装 方向阀

工作 OPERATION

power, KSF08-22 as a one-way valve, allowing oil flow from 1 to 2 flow while cutting off oil from 2 to 1 after the power is turned on, the spool of the plug is lifted so that the flow direction is turned on.

断电时, SF08-22 用作单向阀, 允许油液从 ① 流向 ②, 同时截止油液从 ② 流向 ①。
通电后, 插件的阀芯提升, 从而接通 ② 流向 ① 此模式允许双向流动。

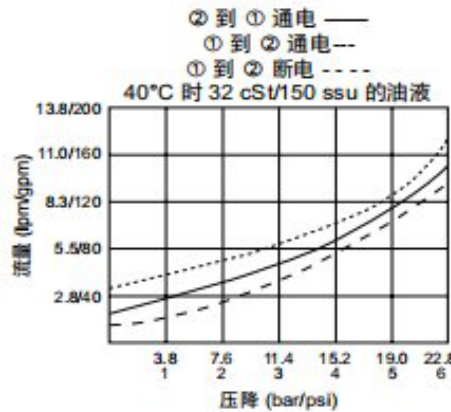
符号 SYMBOL



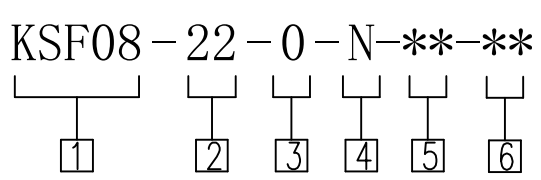
技术参数 SPECIFICATIONS

工作压力 (Operating pressure):	350bar
流量 (Flow):	See PRESSURE DROP VS. FLOW graph
内泄漏 (Internal Leakage):	5 滴/min. max. at 350 bar
温度 (Temperature):	-40° C to + 120° C
过滤 (Filtration):	参考过滤要求 (Reference filter requirements)
油液 (Fluids):	Mineral-based fluids with viscosities of 7.4 to 420 cSt. (矿物油粘度)
插孔 (Cavity):	VC08-2

压力-流量曲线 PRESSURE DROP VS. FLOW



订货代号 TO ORDER



① 公司代码
Company code

④ 密封件 Sealing ring
N 丁氰橡胶 (标准型)
BUNA N (Std.)

② 功能
22= 二位三通
Piloted 2-way

V 氟橡胶 Fluorocarbom

③ 0
0= 只订插件
0=Order plug-ins only

⑤ 12DC =12
24DC =24

⑥ coli DIN 43650 =DG
coli DT 04-2P =ER
两根导线 =DL

安装尺寸 INSTALLATION DIMENSIONS

