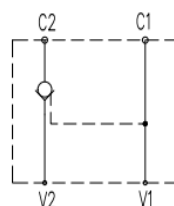


型号/TYPE	A	B	C	D	E	F	G	H	I	J	K
KVRSL-G1/4	80	29	35	14	50	10	40	∅6.5	30	60	45
KVRSL-G3/8	80	29	35	14	50	10	40	∅6.5	30	60	45
KVRSL-G1/2	100	38	38	19	57	15	40	∅8.5	35	70	57
KVRSL-G3/4	140	47	68	25	90	20	50	∅10.5	44	90	70

### 符号/SYMBOL:



### 技术参数/TECHNICAL DATA:

应用材料/MATERIAL EMPLOYED

阀体/BODY: 钢/STEEL

阀芯/VALVES: 钢/STEEL

密封/SEALS: 丁腈胶/NBR

温度/TEMPERATURES

理想工作温度: +40°C~+70°C

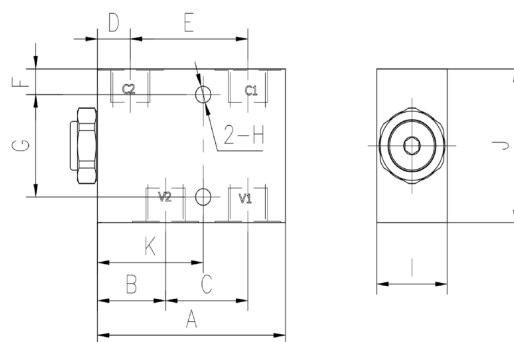
Ideal operating range between +40°C and

最低/最高环境温度: -20°C~+60°C

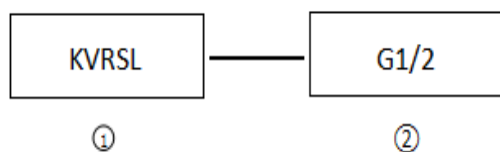
Min/Max environment temps -20°C~and

最高工作温度: 90°C/Max operating

### 外形尺寸/OVER



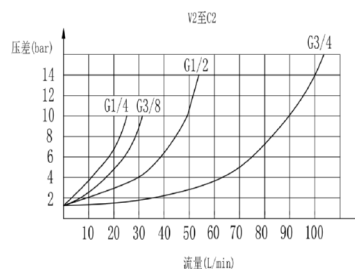
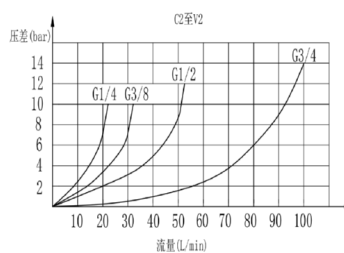
### 型号说明/MODEL CODE:



①单向液压锁系列代号/single pilot check valve

②阀体连接螺纹形式/connect thread dimension:BBSP

### 流量曲线图/FLOW



型号/TYPE	最大压力 (bar)		最大流量 (L/min)	先导比 (pilot ratio)	开启压力 (cracking pressure) (bar)
	钢/steel	铝/aluminum			
KVRSL-G1/4	350	200	20	7.1: 1	3.5
KVRSL-G3/8			30	7.1: 1	
KVRSL-G1/2			50	4.8: 1	
KVRSL-G3/4			100	5.4: 1	