

KSCCB

顺序阀

说明 DESCRIPTION

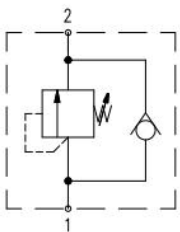
Diectacting sequence valve with reverse flow check

带反向流量检查的直动顺序阀

工作 OPERATION

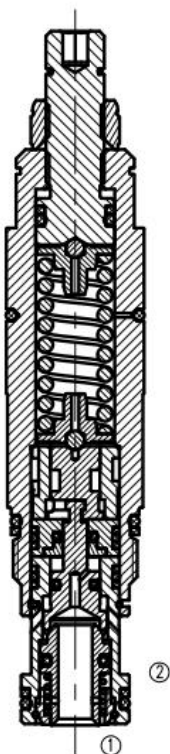
Atmospherically referenced, direct-acting sequence valves with reverse-flow check will supply a secondary circuit with flow once the pressure at the inlet (port ①) has exceeded the valve setting. Additionally, these valves incorporate an integral check valve to provide reverse flow from port ② to port ①. The pressure setting of this sequence valve controls the pressure at port ① relative to the atmospheric vent. 一旦入口 ① 的压力超过阀门设置，带有反流检查的大气参考直接作用顺序阀将为二级电路提供流量。此外，这些阀门包含一个整体止回阀，以提供从端口 ② 到端口 ① 的反向流动，该阀的压力设置控制端口 ① 相对于大气通风口的压力

符号 SYMBOL

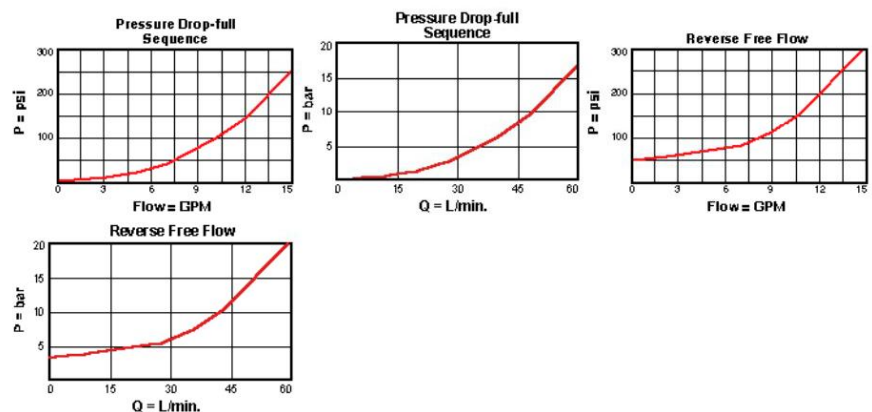


技术参数 SPECIFICATIONS

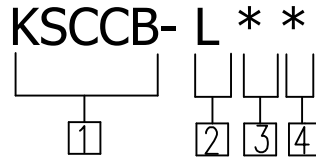
工作压力 (Operating pressure):	350bar
流量 (Flow):	60L/min
内泄漏 (Internal Leakage):	<0.7ml/min at 100bar
温度 (Temperature):	-40° C to + 120° C
过滤 (Filtration):	参考过滤要求 (Reference filter requirements)
油液 (Fluids):	Mineral-based fluids with viscosities of 7.4 to 420 cSt. (矿物油粘度)
插孔 (Cavity):	T-13A



压力-流量曲线 PRESSURE DROP VS. FLOW



订货代号 TO ORDER



① 公司代号
Company code

④ 密封件 Sealing ring
N 丁氟橡胶 (标准型)
BUNA N (Std.)

② 控制方式 Control
L=Standard Screw Adjustment
K=Handknob

V 氟橡胶 Fluorocarbom

③ 弹簧调压范围 Spring Ranges
A=100-3000psi (7-210bar) Preset: 1000psi (70bar)
B=50-1500psi (3.5-105bar) Preset: 1000psi (70bar)
C=150-6000psi (10.5-420bar) Preset: 1000psi (70bar)
N=60-800psi (4-55bar) Preset: 400psi (28bar)
Q=60-400psi (4-28bar) Preset: 200psi (14bar)
W=150-4500psi (10.5-315bar) Preset: 1000psi (70bar)

安装尺寸 INSTALLATION DIMENSIONS

