

KRV10-22A

差动式溢流阀

说明 DESCRIPTION

Threaded cartridge, direct acting, differential relief valves

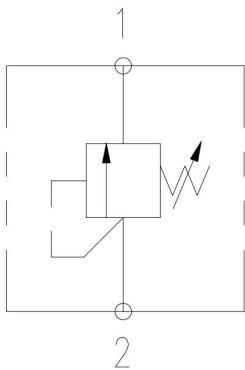
螺纹插装，直动型，差动型溢流阀

工作 OPERATION

The valve blocks flow from ② to ① until sufficient pressure is present at ② to force the poppet from its seat.

当②口压力达到设定压力时，从②口到①口打开，以保持系统压力不超过设定值。

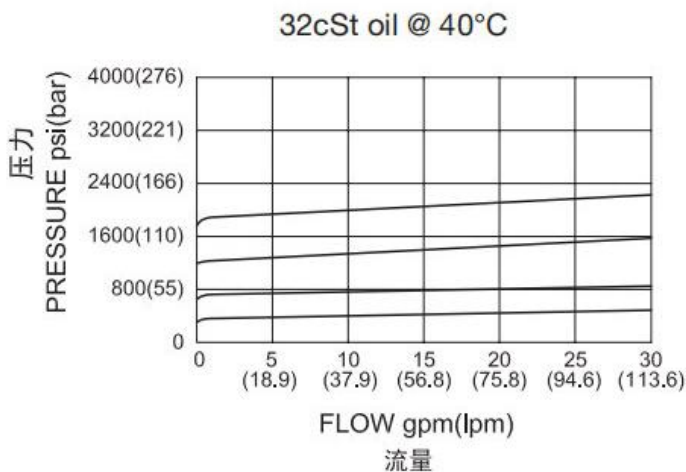
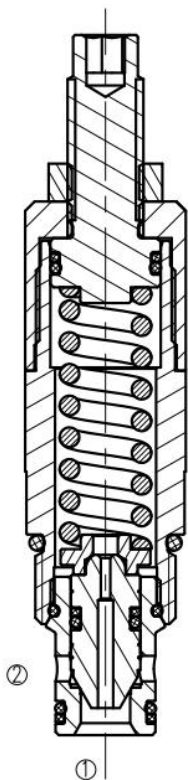
符号 SYMBOL



技术参数 SPECIFICATIONS

工作压力 (Operating pressure):	240bar
流量 (Flow):	113L/min
内泄漏 (Internal Leakage):	5 drops/min (滴/分). max. to 80% of nominal setting
单向阀开启压力 (Check valve opening pressure):	crack pressure at 0.95 lpm / 0.25 gpm
温度 (Temperature):	-20° C to +90° C
过滤 (Filtration):	参考过滤要求 (Reference filter requirements)
油液 (Fluids):	Mineral-based fluids with viscosities of 7.4 to 420 cSt. (矿物油粘度)
插孔 (Cavity):	VC10-2

压力-流量曲线 PRESSURE DROP VS. FLOW



订货代号 TO ORDER

KRV10-22A-*-*-*



1 公司代号
Company code

2 0
0= 只订插件
0=Order plug-ins only

3 密封件 Sealing ring
N 丁氰橡胶 (标准型)
BUNA N (Std.)
V 氟橡胶 Fluorocarbom

4 弹簧调压范围 (Standard Spring Ranges):
6=150-600psi (10.34-41.38bar)
13=150-1300psi (10.34-89.66bar)
25=250-2400psi (17.24-165.52bar)
35=250-3500psi (17.24-241.38bar)

安装尺寸 INSTALLATION DIMENSIONS

