

## KCBEG

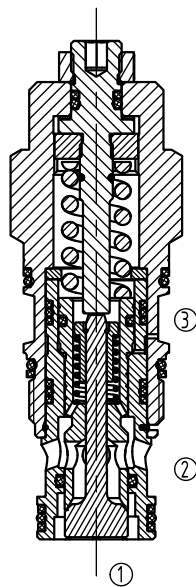
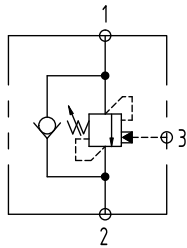
平衡阀

## 说明 DESCRIPTION

A cartridge-style standard capacity counterbalance valve

平衡阀

## 符号 SYMBOL



## 工作 OPERATION

Counterbalance valves with pilot assist are meant for control on overrunning load. The check valve allows free flow from port ② to port ① while a direct-acting, pilot-assisted relief valve controls flow from port ① to port ②. Pilot assist at port ③ lowers the effective setting of the relief valve at a rate determined by the pilot ratio.

带先导开启平衡阀用于控制超越负载工况。油液从②口到①口单向自由流动，油液经直动，先导辅助从①口溢流到②口，③口是溢流辅助控制口，按控制比降低溢流功能的有效设定值。

## 特性 FEATURES

• Counterbalance valves should be set at least 1.3 times the maximum load induced pressure.

最大设定压力至少为最大负载压力的1.3倍。

• Back pressure at port ② adds to the effective relief setting at a ratio of 1 plus the pilot ratio times the backpressure.

②口的背压按"控制比+1"的倍数加到溢流阀的设定值上即增加值=(1+控制比)X压力值。

• Reseat exceeds 85% of set pressure when the valve is standard set.

Seating lower than the standard set pressure may result in lower reseal percentages.

标准设定时，闭合压力值大于设定压力值的85%；低于标准设定时，则闭合压力值的百分比相应降低。

• Factory pressure setting established at 30cc/min.

工厂的设定是指当溢流阀开启(流量为33cc/min)时的压力。

## 技术参数 SPECIFICATIONS

工作压力(Operating pressure): 350bar

最大负载(Max. Recommended Load Pressure at Max. Setting): 270bar

流量(Flow): See FLOW CHARACTERISTICS chart

内泄露(Internal Leakage): 5drops/min(滴/分)

控制比(Pilot Ratio): 4.5:1

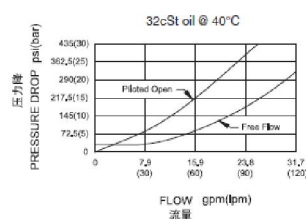
温度(Temperature): -40° C to + 120° C

过滤(Filtration): 参考过滤要求 (Reference filter requirements)

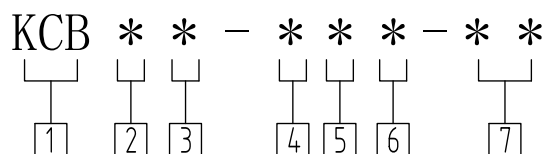
油液(Fluids): Mineral-based fluids with viscosities of 7.4 to 420 cSt.  
(矿物油粘度)

插孔(Cavity): SUN T-2A

## 压力-流量曲线 PRESSURE DROP VS. FLOW



订货代号 TO ORDER



1 功能  
KCB=平衡阀  
Counterbalance Cartridge Valve

2 流量 Flow  
E=120L/min

3 控制比 Pilot Ratio  
G= 4.5:1  
H=10:1

4 控制方式 Control  
L=Standard Screw Adjustment

5 弹簧调压范围 Spring Ranges  
J= 2000-5000psi (140-350bar)  
Preset:3000psi (210bar) (Check:1.7bar)  
K= 1000-2500psi (70-150bar)  
Preset:2000psi (140bar) (Check:1.7bar)  
C= 2000-5000psi (140-350bar)  
Preset:3000psi (210bar) (Check:0.3bar)  
D= 1000-2500psi (70-150bar)  
Preset:2000psi (140bar) (Check:0.3bar)

6 油封 Seal Kits  
N 丁氟橡胶 BUNA N  
V 氟橡胶 Viton

7 阀块油口 Body Porting  
空白 Blank=不带阀块 None  
8T= SAE8  
10T=SAE10  
3G=G3/8  
4G=G1/2

安装尺寸 INSTALLATION DIMENSIONS

Number of Counter-clockwise Turns

全调3.75圈

Unit=Millimeters

